

OPEN MARKET  
JULY 2022

JOHNSON-TILES®  
Tile Artisans Since 1901

# J O H N S O N • T I L E S<sup>®</sup>

Tile Artisans Since 1901

Johnson Tiles is a division of Norcros SA Proprietary Limited, is a leading manufacturer of glazed ceramic wall and floor tiles. Johnson Tiles has a long history as an international market leader in tile manufacture. Throughout the decades, Johnson Tiles has continuously delivered distinctive and stylish new products for both the domestic and commercial markets on an international scale.

Rooted in a dedication to design and manufacture excellence, Johnson Tiles is a now one of the largest manufacturers of ceramic tiles, in South Africa. Johnson Tiles has been trusted by individuals, contractors, architects, designers and distributors for decades. Our production facilities in Olifantsfontein, Johannesburg, manufacture tiles of the highest quality, adhering to the strictest ISO and SANS standards of quality. Our on-site technical laboratory conducts stringent tests on a daily basis to ensure every product lives up to our values of safety, durability, versatility and dirt-resistance.

## DESIGN EXCELLENCE

### **DIRT RESISTANT**

Our tiles are built for living, designed to withstand the wear and tear that comes with a busy household or a high-traffic public space.

### **DURABLE**

Ceramic materials are famed for their durability, and our manufacturing processes are designed to improve this quality even further. The high temperature of our firings makes our ceramic tiles extremely strong and impervious to penetration by liquids, dirt and staining agents, giving them a marked advantage over natural materials like wood and stone.

### **VERSATILE**

We strive to provide consumers with one of the widest ranges of tiles available, offering many variations in colour, material, size, design, and application.

### **SAFE**

Our tiles contain no harmful chemicals or volatile organic compounds, making them safe for any domestic or commercial application. This is particularly effective in maintaining high levels of hygiene and preventing the formation of mould in rooms with high levels of humidity. Certain tile ranges also include textured options for added slip resistance in wet and outdoor areas.





## CURATED COLLECTIONS

For decades, Johnson Tiles has been a trusted partner in helping create the most beautiful South African spaces. We pride ourselves in the design, craft and precision that goes into every tile we make. We hope you love these collections, as much as we loved creating them.

**JOHNSON • TILES®**

Tile Artisans Since 1901





# WOOD COLLECTION

Made On Earth

The Johnson Tiles design specialists have created the Wood Collection for people who love nature and all its wonders. The collection features all the latest international trendy shades and textures, making it easy to bring the outdoors into your home.



JOHNSON • TILES®  
Tile Artisans Since 1901







# ANTIC

An elegant mixed wood design with natural details. Perfect for living room floors.

## ANTIC ROBLE

Product Code: ANT23-ROBLE  
Size: 1200x230x9.5mm  
Faces: 6  
[CLICK HERE](#) to view online



## ANTIC CENERE

Product Code: ANT23-CENERE  
Size: 1200x230x9.5mm  
Faces: 30  
[CLICK HERE](#) to view online



\*Please note, not all tile faces may be shown, if you need to see all tile faces please contact our sales office at [sales@johnsontiles.co.za](mailto:sales@johnsontiles.co.za) for a product fact sheet.

### PRODUCT SUMMARY

Collection:	Wood
Description:	Mixed wood design with natural details
Material:	Porcelain
Finish:	Matt
Area:	Indoor/outdoor
Application:	Floor

### PACKAGING SUMMARY

	1200x230x9.5mm	400x400x8mm	490x490x9mm	242x490x9mm
Weight per m²:	19.56kg	15.63kg	19kg	18.90kg
Weight per pallet:	1296kg	1278kg	1550kg	2196kg
Quantity per box:	1.38m²	1.46m²	1.7m²	1.21m²
Quantity per pallet:	66.24m²	81.76m²	81.6m²	116.16m²
Boxes per pallet:	48	56	48	96
Tiles per box:	5	9	7	10



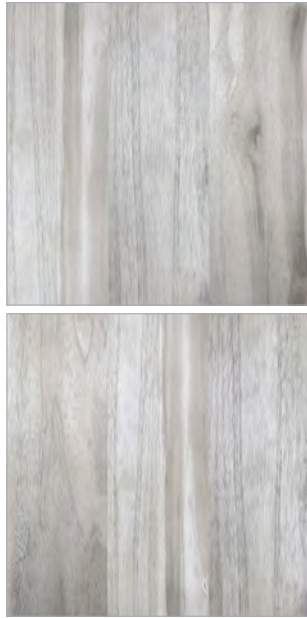


# CEDAR

A sophisticated elegance is brought to life in shades of linear woodgrains. Find just the tone you’re after. Perfect for wall and floor.

### CEDAR MIST

Product Code: CD-513  
Size: 400x400x8mm  
Faces: 5  
[CLICK HERE](#) to view online



### CEDAR VANILLA

Product Code: CD-512  
Size: 400x400x8mm  
Faces: 5  
[CLICK HERE](#) to view online



### CEDAR OCHRE

Product Code: CD-514  
Size: 400x400x8mm  
Faces: 5  
[CLICK HERE](#) to view online



\*Please note, not all tile faces may be shown, if you need to see all tile faces please contact our sales office at [sales@johnsontiles.co.za](mailto:sales@johnsontiles.co.za) for a product fact sheet.

#### PRODUCT SUMMARY

Collection:	Wood
Description:	Soft variable linear woodgrain design
Material:	Glazed ceramic
Finish:	Matt
Area:	Indoor
Application:	Wall & floor

#### PACKAGING SUMMARY

	330x330x7mm	400x400x8mm	490x490x9mm	242x490x9mm
Weight per m²:	13.92kg	15.63kg	19kg	18.90kg
Weight per pallet:	1804kg	1278kg	1550kg	2196kg
Quantity per box:	1.8m²	1.46m²	1.7m²	1.21m²
Quantity per pallet:	129.6m²	81.76m²	81.6m²	116.16m²
Boxes per pallet:	72	56	48	96
Tiles per box:	16	9	7	10





# UKHUNI

An elegant wood design perfect for floors and feature walls.

## UKHUNI ESPRESSO

Product Code: UK-207  
Size: 400x400x8mm  
Faces: 6  
[CLICK HERE](#) to view online



## UKHUNI GREY

Product Code: UK-208  
Size: 400x400x8mm  
Faces: 6  
[CLICK HERE](#) to view online



\*Please note, not all tile faces may be shown, if you need to see all tile faces please contact our sales office at [sales@johnsontiles.co.za](mailto:sales@johnsontiles.co.za) for a product fact sheet.

### PRODUCT SUMMARY

Collection:	Wood
Description:	Planed wood look.
Material:	Glazed ceramic
Finish:	Matt
Area:	Indoor
Application:	Floor & Wall

### PACKAGING SUMMARY

	330x330x7mm	400x400x8mm	490x490x9mm	242x490x9mm
Weight per m <sup>2</sup> :	13.92kg	15.63kg	19kg	18.90kg
Weight per pallet:	1804kg	1278kg	1550kg	2196kg
Quantity per box:	1.8m <sup>2</sup>	1.46m <sup>2</sup>	1.7m <sup>2</sup>	1.21m <sup>2</sup>
Quantity per pallet:	129.6m <sup>2</sup>	81.76m <sup>2</sup>	81.6m <sup>2</sup>	116.16m <sup>2</sup>
Boxes per pallet:	72	56	48	96
Tiles per box:	16	9	7	10





# DECKING

Enjoy the stylish impression of wooden slats without any of the upkeep. Perfect for wall and floor.

**DECKING EARTHEN**

Product Code: DK-523  
Size: 490x490x9mm  
Faces: 7  
[CLICK HERE](#) to view online



**DECKING ASH**

Product Code: DK-524  
Size: 490x490x9mm  
Faces: 7  
[CLICK HERE](#) to view online



\*Please note, not all tile faces may be shown, if you need to see all tile faces please contact our sales office at [sales@johnsontiles.co.za](mailto:sales@johnsontiles.co.za) for a product fact sheet.

PRODUCT SUMMARY	
Collection:	Wood
Description:	Light traditional wood
Material:	Glazed ceramic
Finish:	Matt
Area:	Indoor
Application:	Wall & floor

PACKAGING SUMMARY	330x330x7mm	400x400x8mm	490x490x9mm	242x490x9mm
Weight per m²:	13.92kg	15.63kg	19kg	18.90kg
Weight per pallet:	1804kg	1278kg	1550kg	2196kg
Quantity per box:	1.8m²	1.46m²	1.7m²	1.21m²
Quantity per pallet:	129.6m²	81.76m²	81.6m²	116.16m²
Boxes per pallet:	72	56	48	96
Tiles per box:	16	9	7	10





# MADERA

Large format designs lend a more expansive feeling. Choose the shade that works for you. Perfect for wall and floor.

**MADERA IVORY**

Product Code: ME-950  
Size: 490x490x9mm  
Faces: 6  
[CLICK HERE](#) to view online



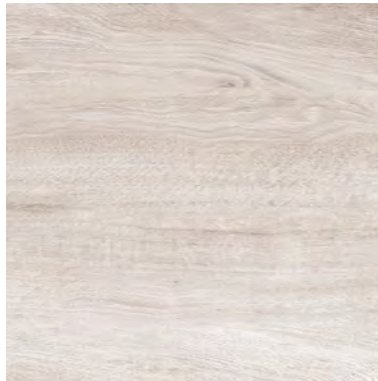
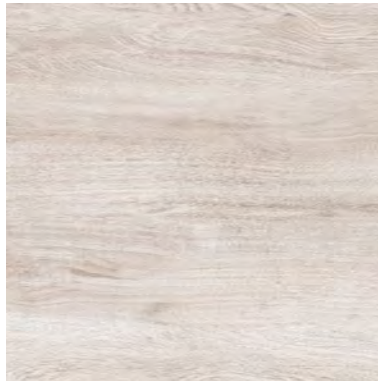
**MADERA GREY**

Product Code: ME-952  
Size: 490x490x9mm  
Faces: 6  
[CLICK HERE](#) to view online



**MADERA BEIGE**

Product Code: ME-951  
Size: 490x490x9mm  
Faces: 6  
[CLICK HERE](#) to view online



\*Please note, not all tile faces may be shown, if you need to see all tile faces please contact our sales office at [sales@johnsontiles.co.za](mailto:sales@johnsontiles.co.za) for a product fact sheet.

**PRODUCT SUMMARY**

Collection:	Wood
Description:	Soft wood look design
Material:	Glazed ceramic
Finish:	Matt
Area:	Indoor
Application:	Wall & floor

**PACKAGING SUMMARY**

	330x330x7mm	400x400x8mm	490x490x9mm	242x490x9mm
Weight per m²:	13.92kg	15.63kg	19kg	18.90kg
Weight per pallet:	1804kg	1278kg	1550kg	2196kg
Quantity per box:	1.8m²	1.46m²	1.7m²	1.21m²
Quantity per pallet:	129.6m²	81.76m²	81.6m²	116.16m²
Boxes per pallet:	72	56	48	96
Tiles per box:	16	9	7	10





# PARQUET

Create a sophisticated look with this vintage throwback. No polishing. Just an easy wipe. Perfect for floors.

## PARQUET ASH

Product Code: PQ-249

Size: 490x490x9mm

Faces: 12

[CLICK HERE](#) to view online



\*Please note, not all tile faces may be shown, if you need to see all tile faces please contact our sales office at [sales@johnsontiles.co.za](mailto:sales@johnsontiles.co.za) for a product fact sheet.

### PRODUCT SUMMARY

Collection:	Wood
Description:	Multicoloured parquet wood design
Material:	Glazed ceramic
Finish:	Matt
Area:	Indoor
Application:	Floor

### PACKAGING SUMMARY

	330x330x7mm	400x400x8mm	490x490x9mm	242x490x9mm
Weight per m²:	13.92kg	15.63kg	19kg	18.90kg
Weight per pallet:	1804kg	1278kg	1550kg	2196kg
Quantity per box:	1.8m²	1.46m²	1.7m²	1.21m²
Quantity per pallet:	129.6m²	81.76m²	81.6m²	116.16m²
Boxes per pallet:	72	56	48	96
Tiles per box:	16	9	7	10





# VINTAGE WOOD

A homely weathered look. Capture time in a tile that will remain forever classic. Perfect for wall and floor.

**VINTAGE MULTICOLOURED WOOD**

Product Code: VT-065

Size: 490x490x9mm

Faces: 4

[CLICK HERE](#) to view online



\*Please note, not all tile faces may be shown, if you need to see all tile faces please contact our sales office at [sales@johnsontiles.co.za](mailto:sales@johnsontiles.co.za) for a product fact sheet.

PRODUCT SUMMARY		PACKAGING SUMMARY				
Collection:	Wood	330x330x7mm	400x400x8mm	490x490x9mm	242x490x9mm	
Description:	Woodlook design	Weight per m²:	13.92kg	15.63kg	19kg	18.90kg
Material:	Glazed ceramic	Weight per pallet:	1804kg	1278kg	1550kg	2196kg
Finish:	Matt	Quantity per box:	1.8m²	1.46m²	1.7m²	1.21m²
Area:	Indoor / Outdoor	Quantity per pallet:	129.6m²	81.76m²	81.6m²	116.16m²
Application:	Wall & floor	Boxes per pallet:	72	56	48	96
		Tiles per box:	16	9	7	10





## BARN

Enjoy a relaxed, country floorboard look. Choose from washed grain tones to complement your setting. Perfect for wall and floor.

### BARN ASH

Product Code: BA-241  
Size: 242x490x9mm  
Faces: 4  
[CLICK HERE](#) to view online



### BARN ALMOND

Product Code: BA-242  
Size: 242x490x9mm  
Faces: 4  
[CLICK HERE](#) to view online



\*Please note, not all tile faces may be shown, if you need to see all tile faces please contact our sales office at [sales@johnsontiles.co.za](mailto:sales@johnsontiles.co.za) for a product fact sheet.

#### PRODUCT SUMMARY

Collection:	Wood
Description:	Weathered wood design
Material:	Glazed ceramic
Finish:	Matt
Area:	Indoor
Application:	Wall & floor

#### PACKAGING SUMMARY

	330x330x7mm	400x400x8mm	490x490x9mm	242x490x9mm
Weight per m <sup>2</sup> :	13.92kg	15.63kg	19kg	18.90kg
Weight per pallet:	1804kg	1278kg	1550kg	2196kg
Quantity per box:	1.8m <sup>2</sup>	1.46m <sup>2</sup>	1.7m <sup>2</sup>	1.21m <sup>2</sup>
Quantity per pallet:	129.6m <sup>2</sup>	81.76m <sup>2</sup>	81.6m <sup>2</sup>	116.16m <sup>2</sup>
Boxes per pallet:	72	56	48	96
Tiles per box:	16	9	7	10





# CRATE

A raw grain wood look that makes for a homely, textured feel. Perfect for wall and floor.

### CRATE SCUFFED

Product Code: CR-126  
Size: 242x490x9mm  
Faces: 6  
[CLICK HERE](#) to view online



### CRATE BROWN

Product Code: CR-127  
Size: 242x490x9mm  
Faces: 8  
[CLICK HERE](#) to view online



\*Please note, not all tile faces may be shown, if you need to see all tile faces please contact our sales office at [sales@johnsontiles.co.za](mailto:sales@johnsontiles.co.za) for a product fact sheet.

#### PRODUCT SUMMARY

Collection:	Wood
Description:	Weathered wood design
Material:	Glazed ceramic
Finish:	Matt
Area:	Indoor
Application:	Wall & floor

#### PACKAGING SUMMARY

	330x330x7mm	400x400x8mm	490x490x9mm	242x490x9mm
Weight per m²:	13.92kg	15.63kg	19kg	18.90kg
Weight per pallet:	1804kg	1278kg	1550kg	2196kg
Quantity per box:	1.8m²	1.46m²	1.7m²	1.21m²
Quantity per pallet:	129.6m²	81.76m²	81.6m²	116.16m²
Boxes per pallet:	72	56	48	96
Tiles per box:	16	9	7	10





# ILIZA WOOD

A calm elegant wood look. This tile also features a stylish wave structure adding a unique textural effect. Ideal for feature walls.

### ILIZA WOOD SOFT GREY

Product Code: LZ-060  
Size: 242x490x9mm  
Faces: 4  
[CLICK HERE](#) to view online



### ILIZA WOOD SAND

Product Code: LZ-061  
Size: 242x490x9mm  
Faces: 4  
[CLICK HERE](#) to view online



'WAVE' SURFACE

\*Please note, not all tile faces may be shown, if you need to see all tile faces please contact our sales office at [sales@johnsontiles.co.za](mailto:sales@johnsontiles.co.za) for a product fact sheet.

#### PRODUCT SUMMARY

Collection:	Wood
Description:	Light traditional wood
Material:	Glazed ceramic
Finish:	Wave Structure
Area:	Indoor
Application:	Wall & floor

#### PACKAGING SUMMARY

	330x330x7mm	400x400x8mm	490x490x9mm	242x490x9mm
Weight per m²:	13.92kg	15.63kg	19kg	18.90kg
Weight per pallet:	1804kg	1278kg	1550kg	2196kg
Quantity per box:	1.8m²	1.46m²	1.7m²	1.21m²
Quantity per pallet:	129.6m²	81.76m²	81.6m²	116.16m²
Boxes per pallet:	72	56	48	96
Tiles per box:	16	9	7	10





# NATURAL MIX

Shades of the deep forest come together in offset harmony. Perfect for wall and floor.

### NATURAL MIX CLADDING

Product Code: NC-658  
Size: 242x490x9mm  
Faces: 4  
[CLICK HERE](#) to view online



\*Please note, not all tile faces may be shown, if you need to see all tile faces please contact our sales office at [sales@johnsontiles.co.za](mailto:sales@johnsontiles.co.za) for a product fact sheet.

PRODUCT SUMMARY		PACKAGING SUMMARY				
Collection:	Wood	330x330x7mm	400x400x8mm	490x490x9mm	242x490x9mm	
Description:	Multicoloured wood strip design	Weight per m <sup>2</sup> :	13.92kg	15.63kg	19kg	18.90kg
Material:	Glazed ceramic	Weight per pallet:	1804kg	1278kg	1550kg	2196kg
Finish:	Matt	Quantity per box:	1.8m <sup>2</sup>	1.46m <sup>2</sup>	1.7m <sup>2</sup>	1.21m <sup>2</sup>
Area:	Indoor	Quantity per pallet:	129.6m <sup>2</sup>	81.76m <sup>2</sup>	81.6m <sup>2</sup>	116.16m <sup>2</sup>
Application:	Wall & floor	Boxes per pallet:	72	56	48	96
		Tiles per box:	16	9	7	10





# MOKATO

A vibrant design that mimics a bold wood grain. Perfect for floors and feature walls.

## MOKATO WOOD EMBER

Product Code: MO-097  
Size: 242x490x9mm  
Faces: 14  
[CLICK HERE](#) to view online



## MOKATO WOOD GREY METALLIC

Product Code: MO-098  
Size: 242x490x9mm  
Faces: 14  
[CLICK HERE](#) to view online



\*Please note, not all tile faces may be shown, if you need to see all tile faces please contact our sales office at [sales@johnsontiles.co.za](mailto:sales@johnsontiles.co.za) for a product fact sheet.

### PRODUCT SUMMARY

Collection:	Wood
Description:	Bold wood look
Material:	Glazed ceramic
Finish:	Matt
Area:	Indoor
Application:	Wall & floor

### PACKAGING SUMMARY

	330x330x7mm	400x400x8mm	490x490x9mm	242x490x9mm
Weight per m²:	13.92kg	15.63kg	19kg	18.90kg
Weight per pallet:	1804kg	1278kg	1550kg	2196kg
Quantity per box:	1.8m²	1.46m²	1.7m²	1.21m²
Quantity per pallet:	129.6m²	81.76m²	81.6m²	116.16m²
Boxes per pallet:	72	56	48	96
Tiles per box:	16	9	7	10





# MOPANE

The Mopane Wood Washed Ivory tile captures a unique bleached wood look. Create a floor and wall also turn any plan wall into a trendy design feature.

**MOPANE WOOD WASHED**

Product Code: MP-204

Size: 242x490x9mm

Faces: 8

[CLICK HERE](#) to view online



\*Please note, not all tile faces may be shown, if you need to see all tile faces please contact our sales office at [sales@johnsontiles.co.za](mailto:sales@johnsontiles.co.za) for a product fact sheet.

**PRODUCT SUMMARY**

Collection:	Wood
Description:	Wood washed look
Material:	Glazed ceramic
Finish:	Matt
Area:	Indoor
Application:	Wall & floor

**PACKAGING SUMMARY**

	330x330x7mm	400x400x8mm	490x490x9mm	242x490x9mm
Weight per m²:	13.92kg	15.63kg	19kg	18.90kg
Weight per pallet:	1804kg	1278kg	1550kg	2196kg
Quantity per box:	1.8m²	1.46m²	1.7m²	1.21m²
Quantity per pallet:	129.6m²	81.76m²	81.6m²	116.16m²
Boxes per pallet:	72	56	48	96
Tiles per box:	16	9	7	10





# TZANEEN

Enliven your room with striking flowing wood and cement pattern. Perfect for wall and floor.

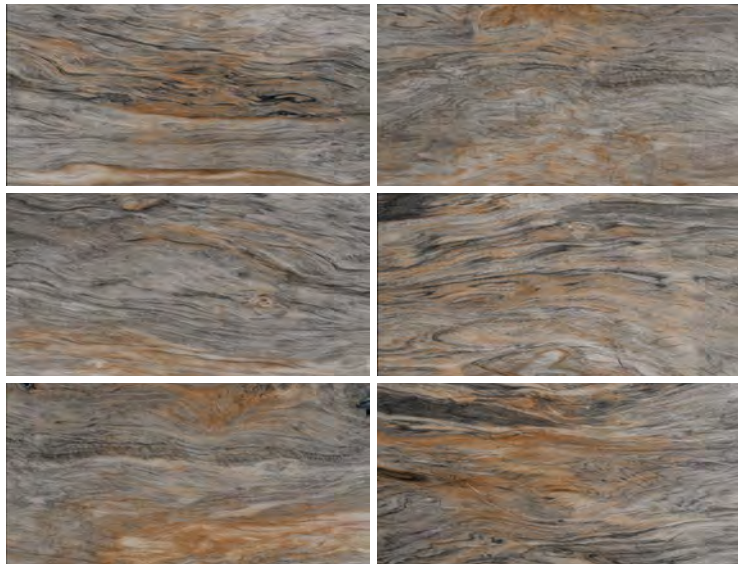
## TZANEEN BROWN

Product Code: TA-072

Size: 242x490x9mm

Faces: 20

[CLICK HERE](#) to view online



## TZANEEN GREY

Product Code: TA-073

Size: 242x490x9mm

Faces: 20

[CLICK HERE](#) to view online



\*Please note, not all tile faces may be shown, if you need to see all tile faces please contact our sales office at [sales@johnsontiles.co.za](mailto:sales@johnsontiles.co.za) for a product fact sheet.

### PRODUCT SUMMARY

Collection:	Natura
Description:	Wood and cement pattern
Material:	Glazed ceramic
Finish:	Matt
Area:	Indoor
Application:	Floor & Wall

### PACKAGING SUMMARY

	330x330x7mm	400x400x8mm	490x490x9mm	242x490x9mm
Weight per m <sup>2</sup> :	13.92kg	15.63kg	19kg	18.90kg
Weight per pallet:	1804kg	1278kg	1550kg	2196kg
Quantity per box:	1.8m <sup>2</sup>	1.46m <sup>2</sup>	1.7m <sup>2</sup>	1.21m <sup>2</sup>
Quantity per pallet:	129.6m <sup>2</sup>	81.76m <sup>2</sup>	81.6m <sup>2</sup>	116.16m <sup>2</sup>
Boxes per pallet:	72	56	48	96
Tiles per box:	16	9	7	10





# STONE COLLECTION

Timeless Beauty

The Stone Collection is made for anyone who loves the timeless beauty of natural stone and rock. Our trend specialists have created a modern collection of nature's finest shades and textures. Now it's easy to come home to the great outdoors.







# DOLOMITE

A natural and authentic slate stone design. Perfect for wall and floor.

### DOLOMITE MIST

Product Code: DO-051  
Size: 330x330x7mm  
Faces: 17  
[CLICK HERE](#) to view online



### DOLOMITE RUST

Product Code: DO-053  
Size: 330x330x7mm  
Faces: 17  
[CLICK HERE](#) to view online



\*Please note, not all tile faces may be shown, if you need to see all tile faces please contact our sales office at [sales@johnsontiles.co.za](mailto:sales@johnsontiles.co.za) for a product fact sheet.

#### PRODUCT SUMMARY

Collection:	Stone
Description:	Slate stone design
Material:	Glazed ceramic
Finish:	Matt
Area:	Indoor
Application:	Wall & floor

#### PACKAGING SUMMARY

	330x330x7mm	400x400x8mm	490x490x9mm	242x490x9mm
Weight per m <sup>2</sup> :	13.92kg	15.63kg	19kg	18.90kg
Weight per pallet:	1804kg	1278kg	1550kg	2196kg
Quantity per box:	1.8m <sup>2</sup>	1.46m <sup>2</sup>	1.7m <sup>2</sup>	1.21m <sup>2</sup>
Quantity per pallet:	129.6m <sup>2</sup>	81.76m <sup>2</sup>	81.6m <sup>2</sup>	116.16m <sup>2</sup>
Boxes per pallet:	72	56	48	96
Tiles per box:	16	9	7	10





# GRANITO

Elegant and sophisticated, this refined stone-slate is boldly minimalist. Perfect for wall and floor.

## GRANITO CHARCOAL

Product Code: GN-553  
Size: 330x330x7mm  
Faces: 1  
[CLICK HERE](#) to view online



## GRANITO MID GREY

Product Code: GN-572  
Size: 330x330x7mm  
Faces: 1  
[CLICK HERE](#) to view online



## GRANITO LIGHT GREY

Product Code: GN-573  
Size: 330x330x7mm  
Faces: 1  
[CLICK HERE](#) to view online



\*Please note, not all tile faces may be shown, if you need to see all tile faces please contact our sales office at [sales@johnsontiles.co.za](mailto:sales@johnsontiles.co.za) for a product fact sheet.

### PRODUCT SUMMARY

Collection:	Stone
Description:	Fine granito design
Material:	Glazed ceramic
Finish:	Matt
Area:	Indoor
Application:	Wall & floor

### PACKAGING SUMMARY

	330x330x7mm	400x400x8mm	490x490x9mm	242x490x9mm
Weight per m²:	13.92kg	15.63kg	19kg	18.90kg
Weight per pallet:	1804kg	1278kg	1550kg	2196kg
Quantity per box:	1.8m²	1.46m²	1.7m²	1.21m²
Quantity per pallet:	129.6m²	81.76m²	81.6m²	116.16m²
Boxes per pallet:	72	56	48	96
Tiles per box:	16	9	7	10

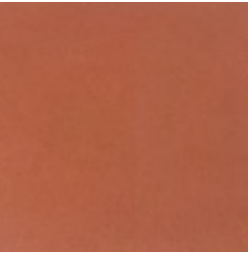




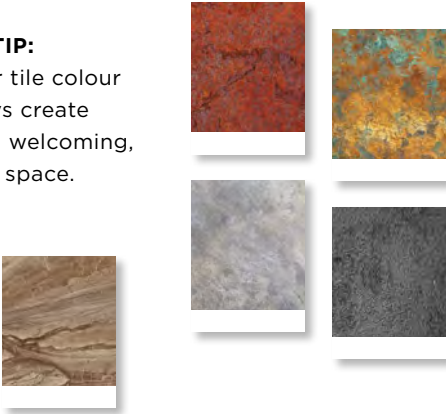
# MARACHINO

Nothing feels more homely than a classic terracotta tile. Perfect for wall and floor.

**MARACHINO COTTA**  
Product Code: MC-580  
Size: 330x330x7mm  
Faces: 1  
[CLICK HERE](#) to view online



**DESIGN TIP:**  
A warmer tile colour  
will always create  
more of a welcoming,  
nurturing space.



\*Please note, not all tile faces may be shown, if you need to see all tile faces please contact our sales office at [sales@johnsontiles.co.za](mailto:sales@johnsontiles.co.za) for a product fact sheet.

PRODUCT SUMMARY

Collection:	Stone
Description:	Antique cotta look
Material:	Glazed ceramic
Finish:	Matt
Area:	Indoor
Application:	Wall & floor

PACKAGING SUMMARY

	330x330x7mm	400x400x8mm	490x490x9mm	242x490x9mm
Weight per m²:	13.92kg	15.63kg	19kg	18.90kg
Weight per pallet:	1804kg	1278kg	1550kg	2196kg
Quantity per box:	1.8m²	1.46m²	1.7m²	1.21m²
Quantity per pallet:	129.6m²	81.76m²	81.6m²	116.16m²
Boxes per pallet:	72	56	48	96
Tiles per box:	16	9	7	10

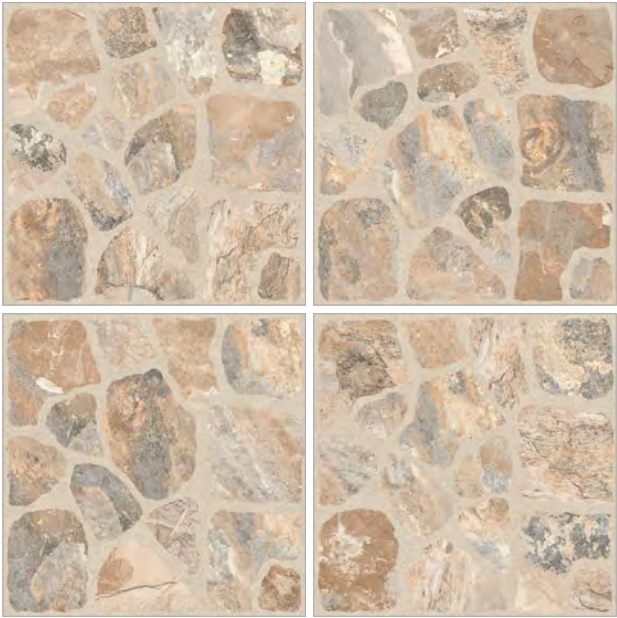




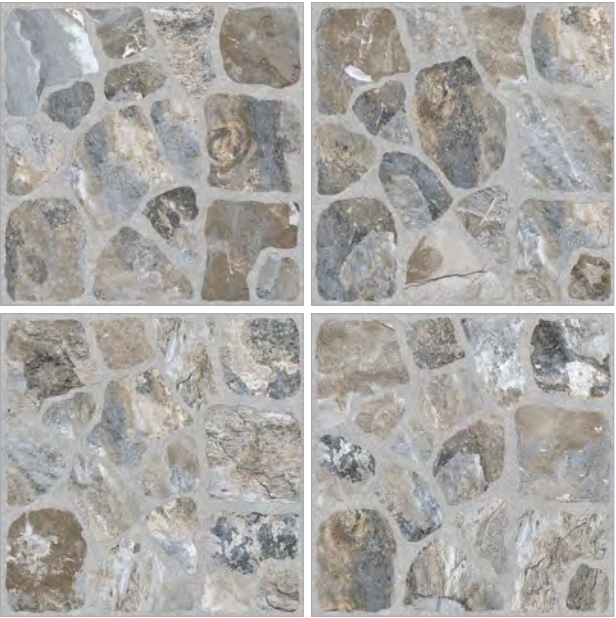
# CALICHE

Create a cobbled village look with this beautiful pebble and rock design. Perfect for wall and floor.

**CALICHE BROWN**  
Product Code: CE-023  
Size: 400x400x8mm  
Faces: 4  
[CLICK HERE](#) to view online



**CALICHE GREY**  
Product Code: CE-019  
Size: 400x400x8mm  
Faces: 4  
[CLICK HERE](#) to view online



\*Please note, not all tile faces may be shown, if you need to see all tile faces please contact our sales office at [sales@johnsontiles.co.za](mailto:sales@johnsontiles.co.za) for a product fact sheet.

PRODUCT SUMMARY	
Collection:	Stone
Description:	Pebble rock and stone design
Material:	Glazed ceramic
Finish:	Matt
Area:	Indoor
Application:	Wall & floor

PACKAGING SUMMARY	330x330x7mm	400x400x8mm	490x490x9mm	242x490x9mm
Weight per m²:	13.92kg	15.63kg	19kg	18.90kg
Weight per pallet:	1804kg	1278kg	1550kg	2196kg
Quantity per box:	1.8m²	1.46m²	1.7m²	1.21m²
Quantity per pallet:	129.6m²	81.76m²	81.6m²	116.16m²
Boxes per pallet:	72	56	48	96
Tiles per box:	16	9	7	10



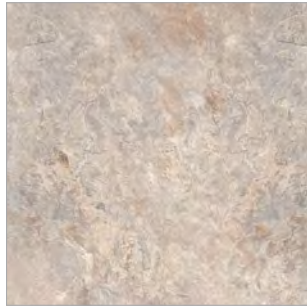
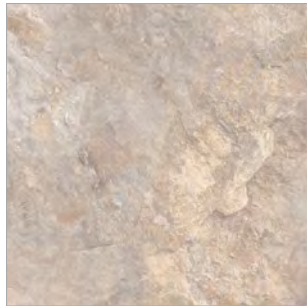


# IKAPA

The rock of ages beautifully executed in an enduring tile. Perfect for wall and floor.

### IKAPA BEIGE

Product Code: IA-016  
Size: 400x400x8mm  
Faces: 7  
[CLICK HERE](#) to view online



### IKAPA COBALT

Product Code: IA-017  
Size: 400x400x8mm  
Faces: 7  
[CLICK HERE](#) to view online



### IKAPA BROWN

Product Code: IA-018  
Size: 400x400x8mm  
Faces: 7  
[CLICK HERE](#) to view online



\*Please note, not all tile faces may be shown, if you need to see all tile faces please contact our sales office at [sales@johnsontiles.co.za](mailto:sales@johnsontiles.co.za) for a product fact sheet.

#### PRODUCT SUMMARY

Collection:	Stone
Description:	An aggressive stone and slate profile
Material:	Glazed ceramic
Finish:	Matt
Area:	Indoor / Outdoor
Application:	Wall & floor

#### PACKAGING SUMMARY

	330x330x7mm	400x400x8mm	490x490x9mm	242x490x9mm
Weight per m²:	13.92kg	15.63kg	19kg	18.90kg
Weight per pallet:	1804kg	1278kg	1550kg	2196kg
Quantity per box:	1.8m²	1.46m²	1.7m²	1.21m²
Quantity per pallet:	129.6m²	81.76m²	81.6m²	116.16m²
Boxes per pallet:	72	56	48	96
Tiles per box:	16	9	7	10





# AMAZON

Subtle yet striking. Contrasting layers of rock make an enchanting feature, perfect for walls.

**AMAZON GREY**  
Product Code: AZ-497  
Size: 242x490x9mm  
Faces: 3  
[CLICK HERE](#) to view online



\*Please note, not all tile faces may be shown, if you need to see all tile faces please contact our sales office at [sales@johnsontiles.co.za](mailto:sales@johnsontiles.co.za) for a product fact sheet.

## PRODUCT SUMMARY

Collection:	Stone
Description:	Cladding mixture of stone and slate
Material:	Glazed ceramic
Finish:	Matt
Area:	Indoor
Application:	Wall

## PACKAGING SUMMARY

	330x330x7mm	400x400x8mm	490x490x9mm	242x490x9mm
Weight per m²:	13.92kg	15.63kg	19kg	18.90kg
Weight per pallet:	1804kg	1278kg	1550kg	2196kg
Quantity per box:	1.8m²	1.46m²	1.7m²	1.21m²
Quantity per pallet:	129.6m²	81.76m²	81.6m²	116.16m²
Boxes per pallet:	72	56	48	96
Tiles per box:	16	9	7	10





# LESWIKA

A wonderfully playful stone look with cladding detail appeal, perfect for walls.

**LESWIKA DECO**

Product Code: LE-910  
Size: 242x490x9mm  
Faces: 1  
[CLICK HERE](#) to view online



\*Please note, not all tile faces may be shown, if you need to see all tile faces please contact our sales office at [sales@johnsontiles.co.za](mailto:sales@johnsontiles.co.za) for a product fact sheet.

**PRODUCT SUMMARY**

Collection:	Stone
Description:	Grey and stone wall cladding tile
Material:	Glazed ceramic
Finish:	Matt
Area:	Indoor / Outdoor
Application:	Wall

**PACKAGING SUMMARY**

	330x330x7mm	400x400x8mm	490x490x9mm	242x490x9mm
Weight per m <sup>2</sup> :	13.92kg	15.63kg	19kg	18.90kg
Weight per pallet:	1804kg	1278kg	1550kg	2196kg
Quantity per box:	1.8m <sup>2</sup>	1.46m <sup>2</sup>	1.7m <sup>2</sup>	1.21m <sup>2</sup>
Quantity per pallet:	129.6m <sup>2</sup>	81.76m <sup>2</sup>	81.6m <sup>2</sup>	116.16m <sup>2</sup>
Boxes per pallet:	72	56	48	96
Tiles per box:	16	9	7	10





# LEKWA SLATE CLADDING

This mottled stone look achieves both a cool and warm earthiness. Perfect for wall and floor.

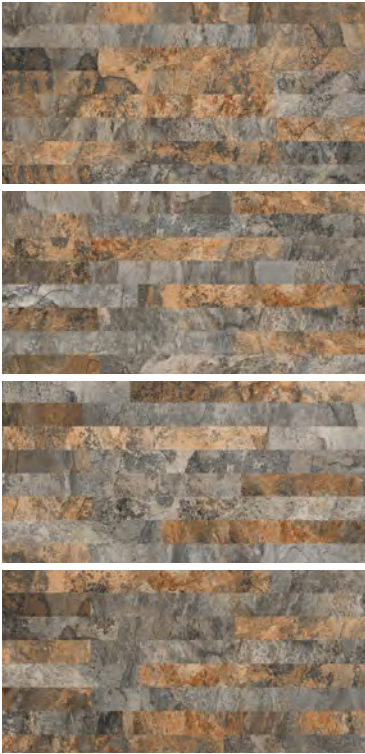
**LEKWA CLADDING**

Product Code: LK-797

Size: 242x490x9mm

Faces: 4

[CLICK HERE](#) to view online



\*Please note, not all tile faces may be shown, if you need to see all tile faces please contact our sales office at [sales@johnsontiles.co.za](mailto:sales@johnsontiles.co.za) for a product fact sheet.

**PRODUCT SUMMARY**

Collection:	Stone
Description:	Slate design wall cladding pressed tile
Material:	Glazed ceramic
Finish:	Matt
Area:	Indoor / Outdoor
Application:	Wall

**PACKAGING SUMMARY**

	330x330x7mm	400x400x8mm	490x490x9mm	242x490x9mm
Weight per m²:	13.92kg	15.63kg	19kg	18.90kg
Weight per pallet:	1804kg	1278kg	1550kg	2196kg
Quantity per box:	1.8m²	1.46m²	1.7m²	1.21m²
Quantity per pallet:	129.6m²	81.76m²	81.6m²	116.16m²
Boxes per pallet:	72	56	48	96
Tiles per box:	16	9	7	10





# CRAZYPAVE COBBLESTONE

The Crazypave Cobblestone mimics the look of a natural cobblestone. Perfect for floors and feature walls.

**CRAZYPAVE COBBLESTONE DARK MIST**

Product Code: CZ-089  
Size: 490x490x9mm  
Faces: 10  
[CLICK HERE](#) to view online



\*Please note, not all tile faces may be shown, if you need to see all tile faces please contact our sales office at [sales@johnsontiles.co.za](mailto:sales@johnsontiles.co.za) for a product fact sheet.

**PRODUCT SUMMARY**

Collection:	Stone
Description:	Pebble rock and stone design
Material:	Glazed ceramic
Finish:	Matt
Area:	Indoor
Application:	Wall & floor

**PACKAGING SUMMARY**

	330x330x7mm	400x400x8mm	490x490x9mm	242x490x9mm
Weight per m²:	13.92kg	15.63kg	19kg	18.90kg
Weight per pallet:	1804kg	1278kg	1550kg	2196kg
Quantity per box:	1.8m²	1.46m²	1.7m²	1.21m²
Quantity per pallet:	129.6m²	81.76m²	81.6m²	116.16m²
Boxes per pallet:	72	56	48	96
Tiles per box:	16	9	7	10

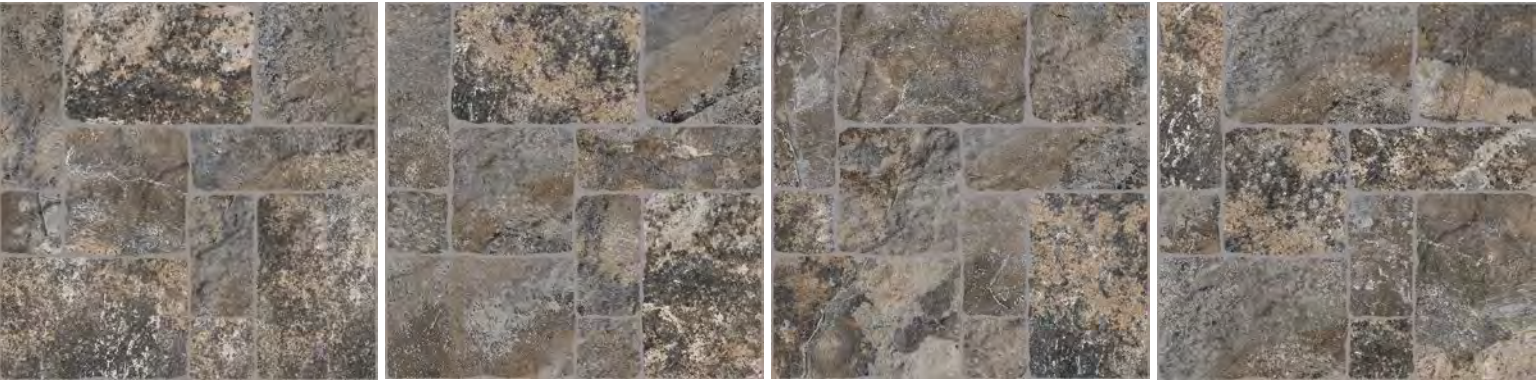




# DOLOMITE COBBLESTONE

This slip resistant tile is great for indoor and outdoor covered patios. The stone look has a natural and timeless style. Perfect for floors.

**Dolomite Cobblestone Metallic Grey**  
Product Code: DO-092/R  
Size: 490x490x9mm  
Faces: 4  
[CLICK HERE](#) to view online



\*Please note, not all tile faces may be shown, if you need to see all tile faces please contact our sales office at [sales@johnsontiles.co.za](mailto:sales@johnsontiles.co.za) for a product fact sheet.

PRODUCT SUMMARY

Collection:	Stone
Description:	Pebble rock and stone design
Material:	Glazed ceramic
Finish:	Slip Resistant
Area:	Indoor
Application:	Wall & floor

PACKAGING SUMMARY

	330x330x7mm	400x400x8mm	490x490x9mm	242x490x9mm
Weight per m²:	13.92kg	15.63kg	19kg	18.90kg
Weight per pallet:	1804kg	1278kg	1550kg	2196kg
Quantity per box:	1.8m²	1.46m²	1.7m²	1.21m²
Quantity per pallet:	129.6m²	81.76m²	81.6m²	116.16m²
Boxes per pallet:	72	56	48	96
Tiles per box:	16	9	7	10





# JABULAPAVE COBBLESTONE NATURAL

This tile brings the authentic look of a vibrant cobblestone into your home. Perfect for floors and feature walls.

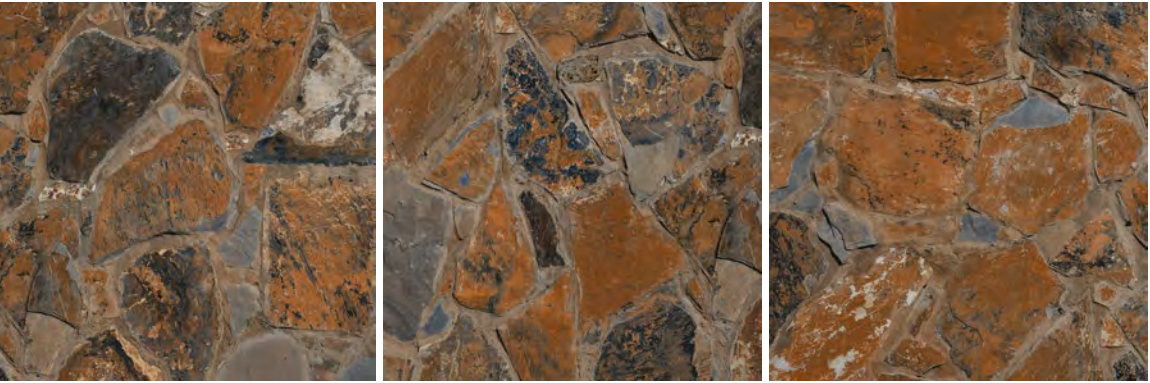
## JABULAPAVE COBBLESTONE NATURAL

Product Code: JP-086

Size: 490x490x9mm

Faces: 16

[CLICK HERE](#) to view online



\*Please note, not all tile faces may be shown, if you need to see all tile faces please contact our sales office at [sales@johnsontiles.co.za](mailto:sales@johnsontiles.co.za) for a product fact sheet.

### PRODUCT SUMMARY

Collection:	Stone
Description:	Contrasted natural stones
Material:	Glazed ceramic
Finish:	Matt
Area:	Covered outdoor
Application:	Wall & floor

### PACKAGING SUMMARY

	330x330x7mm	400x400x8mm	490x490x9mm	242x490x9mm
Weight per m²:	13.92kg	15.63kg	19kg	18.90kg
Weight per pallet:	1804kg	1278kg	1550kg	2196kg
Quantity per box:	1.8m²	1.46m²	1.7m²	1.21m²
Quantity per pallet:	129.6m²	81.76m²	81.6m²	116.16m²
Boxes per pallet:	72	56	48	96
Tiles per box:	16	9	7	10





# LESWIKA COBBLEMIX

A richly contrasted, natural stone colour blocking that enlivenes a room with texture. Perfect for wall and floor.

## LESWIKA COBBLEMIX

Product Code: LE-911

Size: 490x490x9mm

Faces: 3

[CLICK HERE](#) to view online



SLIP RESISTANT



\*Please note, not all tile faces may be shown, if you need to see all tile faces please contact our sales office at [sales@johnsontiles.co.za](mailto:sales@johnsontiles.co.za) for a product fact sheet.

### PRODUCT SUMMARY

Collection:	Stone
Description:	Linear sandstone design
Material:	Glazed ceramic
Finish:	Matt
Area:	Covered outdoor
Application:	Wall & floor

### PACKAGING SUMMARY

	330x330x7mm	400x400x8mm	490x490x9mm	242x490x9mm
Weight per m <sup>2</sup> :	13.92kg	15.63kg	19kg	18.90kg
Weight per pallet:	1804kg	1278kg	1550kg	2196kg
Quantity per box:	1.8m <sup>2</sup>	1.46m <sup>2</sup>	1.7m <sup>2</sup>	1.21m <sup>2</sup>
Quantity per pallet:	129.6m <sup>2</sup>	81.76m <sup>2</sup>	81.6m <sup>2</sup>	116.16m <sup>2</sup>
Boxes per pallet:	72	56	48	96
Tiles per box:	16	9	7	10





# MONAZITE

A multi-shaded, symmetric cobble design. A contemporary take on a natural stone look. Perfect for wall and floor.

**MONAZITE COBBLESTONE BROWN**  
Product Code: MZ-725  
Size: 490x490x9mm  
Faces: 4  
[CLICK HERE](#) to view online



SLIP RESISTANT



\*Please note, not all tile faces may be shown, if you need to see all tile faces please contact our sales office at [sales@johnsontiles.co.za](mailto:sales@johnsontiles.co.za) for a product fact sheet.

## PRODUCT SUMMARY

Collection:	Stone
Description:	Mixed slate on a cobblestone design
Material:	Glazed ceramic
Finish:	Matt / Slip resistant
Area:	Indoor / Outdoor
Application:	Wall & floor

## PACKAGING SUMMARY

	330x330x7mm	400x400x8mm	490x490x9mm	242x490x9mm
Weight per m²:	13.92kg	15.63kg	19kg	18.90kg
Weight per pallet:	1804kg	1278kg	1550kg	2196kg
Quantity per box:	1.8m²	1.46m²	1.7m²	1.21m²
Quantity per pallet:	129.6m²	81.76m²	81.6m²	116.16m²
Boxes per pallet:	72	56	48	96
Tiles per box:	16	9	7	10





# MWAMBA

Natural rock mixed with cobblestone lifts the energy in a room. Perfect for wall and floor.

**MWAMBA NATURAL SMOKE MIX**

Product Code: MM-968

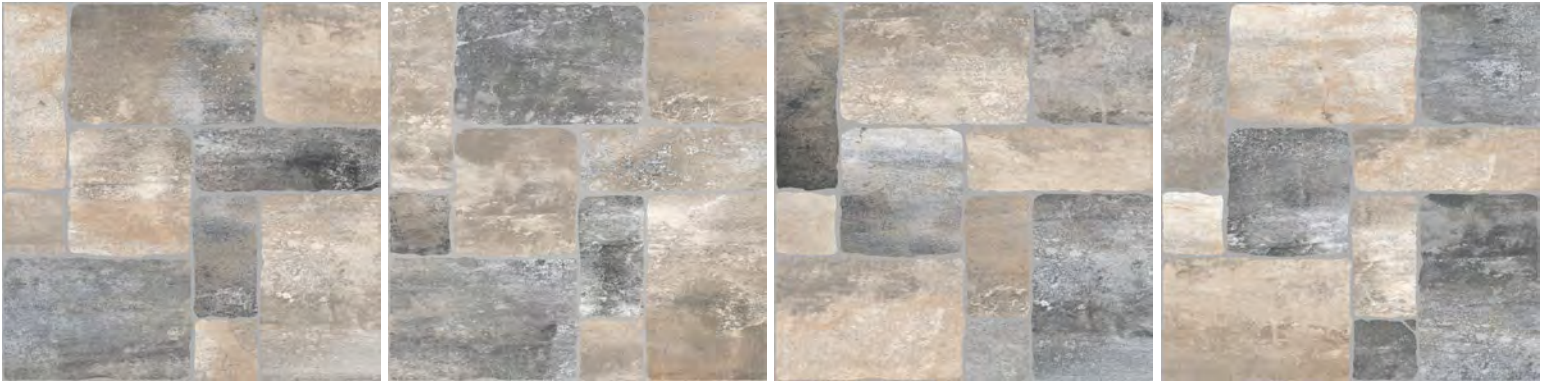
Size: 490x490x9mm

Faces: 4

[CLICK HERE](#) to view online



SLIP RESISTANT



\*Please note, not all tile faces may be shown, if you need to see all tile faces please contact our sales office at [sales@johnsontiles.co.za](mailto:sales@johnsontiles.co.za) for a product fact sheet.

**PRODUCT SUMMARY**

Collection:	Stone
Description:	Natural rock cobblestone design
Material:	Glazed ceramic
Finish:	Matt / Slip Resistant
Area:	Outdoor
Application:	Wall & floor

**PACKAGING SUMMARY**

	330x330x7mm	400x400x8mm	490x490x9mm	242x490x9mm
Weight per m²:	13.92kg	15.63kg	19kg	18.90kg
Weight per pallet:	1804kg	1278kg	1550kg	2196kg
Quantity per box:	1.8m²	1.46m²	1.7m²	1.21m²
Quantity per pallet:	129.6m²	81.76m²	81.6m²	116.16m²
Boxes per pallet:	72	56	48	96
Tiles per box:	16	9	7	10





# URBAN COLLECTION

Life In The City

Our fashion consultants have designed the Urban Collection for anyone who loves the vibrant pulse of city living. This contemporary collection will convert anyone into a trendy urbanite.



JOHNSON • TILES®  
Tile Artisans Since 1901







# METRO

A stylish, classic look with a bevelled appeal that gives extra dimension to a wall.

**METRO BLACK BEVEL**

Product Code: METRO BLACK 2  
Size: 100x200x7mm  
Faces: 1  
[CLICK HERE](#) to view online



**METRO LIGHT GREY BEVEL**

Product Code: METRO L-GREY 2  
Size: 100x200x7mm  
Faces: 1  
[CLICK HERE](#) to view online



**METRO WHITE BEVEL**

Product Code: METRO WHITE 2  
Size: 100x200x7mm  
Faces: 1  
[CLICK HERE](#) to view online



\*Please note, not all tile faces may be shown, if you need to see all tile faces please contact our sales office at [sales@johnsontiles.co.za](mailto:sales@johnsontiles.co.za) for a product fact sheet.

**PRODUCT SUMMARY**

Collection:	Urban
Description:	Gloss wall tile with bevelled edge
Material:	Glazed ceramic
Finish:	Gloss
Area:	Indoor
Application:	Wall

**PACKAGING SUMMARY**

	100x200x7mm
Weight per m²:	14.00kg
Weight per pallet:	1050kg
Quantity per box:	1m²
Quantity per pallet:	75m²
Boxes per pallet:	75
Tiles per box:	50





# GLOSS

A neat classic with a reflective sheen that adds depth. Contrast it with black or light grey spotters. Tile your wall horizontally or vertically.

**GLOSS FLAT BLACK**

Product Code: JSAT3A  
Size: 100x300x7mm  
Faces: 1  
[CLICK HERE](#) to view online



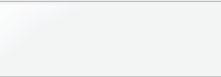
**GLOSS FLAT LIGHT GREY**

Product Code: JSAT2A  
Size: 100x300x7mm  
Faces: 1  
[CLICK HERE](#) to view online



**GLOSS FLAT WHITE**

Product Code: JSAT1A  
Size: 100x300x7mm  
Faces: 1  
[CLICK HERE](#) to view online



**GLOSS FLAT BLACK**

Product Code: GBC-197  
Size: 197x197x7mm  
Faces: 1  
[CLICK HERE](#) to view online



\*Please note, not all tile faces may be shown, if you need to see all tile faces please contact our sales office at [sales@johnsontiles.co.za](mailto:sales@johnsontiles.co.za) for a product fact sheet.

**PRODUCT SUMMARY**

Collection:	Urban
Description:	An elegant glossy finish
Material:	Glazed ceramic
Finish:	Gloss
Area:	Indoor
Application:	Wall

**PACKAGING SUMMARY**

	200x300x7mm	100x300x7mm	197x197x7mm
Weight per m²:	12.80kg	13.50kg	10.90kg
Weight per pallet:	998.40kg	1134kg	1046.40kg
Quantity per box:	0.96m²	0.99m²	1m²
Quantity per pallet:	74.88m²	83.16m²	96m²
Boxes per pallet:	78	84	96
Tiles per box:	16	33	25





# SIMA

The sima tile captures a trendy, screed look that creates a perfect backdrop for modern living spaces. Perfect for wall and floor

**SIMA MIST**

Product Code: SM-975  
Size: 330x330x7mm  
Faces: 9  
[CLICK HERE](#) to view online



**SIMA IVORY**

Product Code: SM-982  
Size: 330x330x7mm  
Faces: 9  
[CLICK HERE](#) to view online



**SIMA CHARCOAL**

Product Code: SM-977/R  
Size: 330x330x7mm  
Faces: 9  
[CLICK HERE](#) to view online



SLIP RESISTANT

\*Please note, not all tile faces may be shown, if you need to see all tile faces please contact our sales office at [sales@johnsontiles.co.za](mailto:sales@johnsontiles.co.za) for a product fact sheet.

**PRODUCT SUMMARY**

Collection:	Urban
Description:	Screed soft cement design
Material:	Glazed ceramic
Finish:	Matt
Area:	Indoor
Application:	Wall & floor

**PACKAGING SUMMARY**

	330x330x7mm	400x400x8mm	490x490x9mm	242x490x9mm
Weight per m²:	13.92kg	15.63kg	19kg	18.90kg
Weight per pallet:	1804kg	1278kg	1550kg	2196kg
Quantity per box:	1.8m²	1.46m²	1.7m²	1.21m²
Quantity per pallet:	129.6m²	81.76m²	81.6m²	116.16m²
Boxes per pallet:	72	56	48	96
Tiles per box:	16	9	7	10





# VENUS

Create a welcoming homeliness in shades of natural stone. Perfect for wall and floor.

**VENUS BEIGE**

Product Code: VU-925  
Size: 330x330x7mm  
Faces: 8  
[CLICK HERE](#) to view online



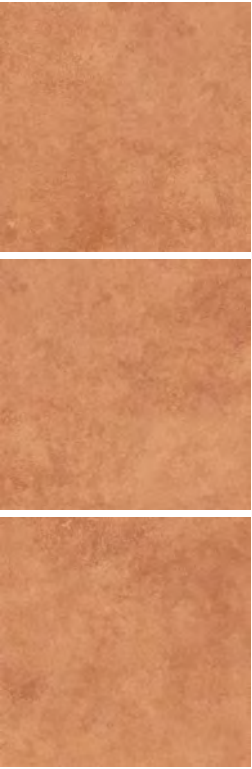
**VENUS GREY**

Product Code: VU-926  
Size: 330x330x7mm  
Faces: 8  
[CLICK HERE](#) to view online



**VENUS COTTA**

Product Code: VU-927  
Size: 330x330x7mm  
Faces: 8  
[CLICK HERE](#) to view online



\*Please note, not all tile faces may be shown, if you need to see all tile faces please contact our sales office at [sales@johnsontiles.co.za](mailto:sales@johnsontiles.co.za) for a product fact sheet.

**PRODUCT SUMMARY**

Collection:	Urban
Description:	Soft natural stone design
Material:	Glazed ceramic
Finish:	Matt
Area:	Indoor
Application:	Wall & floor

**PACKAGING SUMMARY**

	330x330x7mm	400x400x8mm	490x490x9mm	242x490x9mm
Weight per m²:	13.92kg	15.63kg	19kg	18.90kg
Weight per pallet:	1804kg	1278kg	1550kg	2196kg
Quantity per box:	1.8m²	1.46m²	1.7m²	1.21m²
Quantity per pallet:	129.6m²	81.76m²	81.6m²	116.16m²
Boxes per pallet:	72	56	48	96
Tiles per box:	16	9	7	10



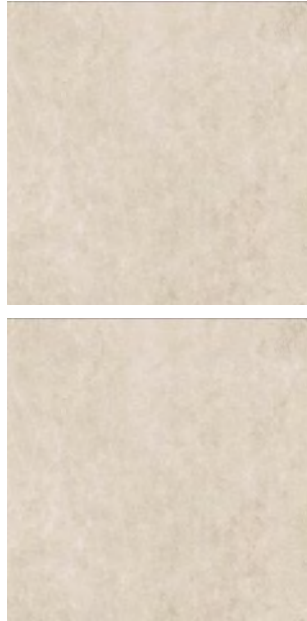


# CHISEL

Create a calm atmosphere with this soft cement design. Perfect for wall and floor.

## CHISEL BEIGE

Product Code: CI-055  
Size: 400x400x8mm  
Faces: 5  
[CLICK HERE](#) to view online



## CHISEL GREY

Product Code: CI-056  
Size: 400x400x8mm  
Faces: 5  
[CLICK HERE](#) to view online



\*Please note, not all tile faces may be shown, if you need to see all tile faces please contact our sales office at [sales@johnsontiles.co.za](mailto:sales@johnsontiles.co.za) for a product fact sheet.

### PRODUCT SUMMARY

Collection:	Urban
Description:	Multicolour soft cement design
Material:	Glazed ceramic
Finish:	Matt
Area:	Indoor
Application:	Wall & floor

### PACKAGING SUMMARY

	330x330x7mm	400x400x8mm	490x490x9mm	242x490x9mm
Weight per m²:	13.92kg	15.63kg	19kg	18.90kg
Weight per pallet:	1804kg	1278kg	1550kg	2196kg
Quantity per box:	1.8m²	1.46m²	1.7m²	1.21m²
Quantity per pallet:	129.6m²	81.76m²	81.6m²	116.16m²
Boxes per pallet:	72	56	48	96
Tiles per box:	16	9	7	10



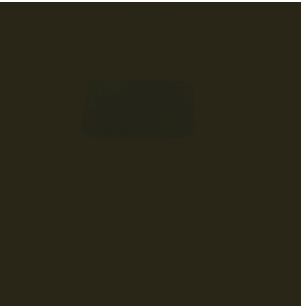


# DECO BLACK

A bold, sophisticated matt surface enhanced with an orange-peel texture. Perfect for wall and floor.

**DECO BLACK**

Product Code: DC-190  
Size: 400x400x8mm  
Faces: 1  
[CLICK HERE](#) to view online



**DECO BLACK**

Product Code: DE-789  
Size: 330x330x7mm  
Faces: 1  
[CLICK HERE](#) to view online



\*Please note, not all tile faces may be shown, if you need to see all tile faces please contact our sales office at [sales@johnsontiles.co.za](mailto:sales@johnsontiles.co.za) for a product fact sheet.

**PRODUCT SUMMARY**

Collection:	Urban
Description:	A textured orange-peel finish
Material:	Glazed ceramic
Finish:	Matt
Area:	Indoor
Application:	Wall & floor

**PACKAGING SUMMARY**

	330x330x7mm	400x400x8mm	490x490x9mm	242x490x9mm
Weight per m²:	13.92kg	15.63kg	19kg	18.90kg
Weight per pallet:	1804kg	1278kg	1550kg	2196kg
Quantity per box:	1.8m²	1.46m²	1.7m²	1.21m²
Quantity per pallet:	129.6m²	81.76m²	81.6m²	116.16m²
Boxes per pallet:	72	56	48	96
Tiles per box:	16	9	7	10





# KILANI

Soft mottled shades that gently anchor the contrast in a room. Perfect for wall and floor.

**KILANI BONE**

Product Code: KI-040  
Size: 400x400x8mm  
Faces: 9  
[CLICK HERE](#) to view online



**KILANI MUSHROOM**

Product Code: KI-042  
Size: 400x400x8mm  
Faces: 9  
[CLICK HERE](#) to view online



**KILANI ASH**

Product Code: KI-043  
Size: 400x400x8mm  
Faces: 9  
[CLICK HERE](#) to view online



\*Please note, not all tile faces may be shown, if you need to see all tile faces please contact our sales office at [sales@johnsontiles.co.za](mailto:sales@johnsontiles.co.za) for a product fact sheet.

PRODUCT SUMMARY		PACKAGING SUMMARY	330x330x7mm	400x400x8mm	490x490x9mm	242x490x9mm
Collection:	Urban	Weight per m²:	13.92kg	15.63kg	19kg	18.90kg
Description:	Multicoloured soft stone design	Weight per pallet:	1804kg	1278kg	1550kg	2196kg
Material:	Glazed ceramic	Quantity per box:	1.8m²	1.46m²	1.7m²	1.21m²
Finish:	Matt	Quantity per pallet:	129.6m²	81.76m²	81.6m²	116.16m²
Area:	Indoor / Outdoor	Boxes per pallet:	72	56	48	96
Application:	Wall & floor	Tiles per box:	16	9	7	10



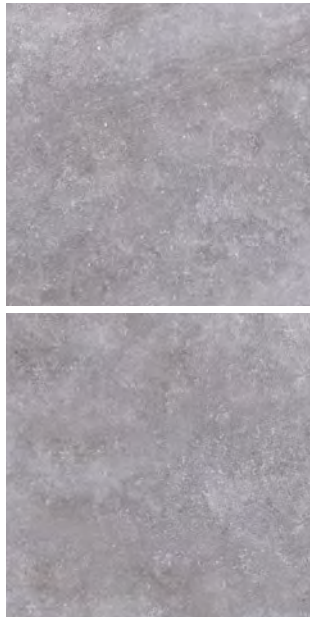


# ZORAH

The washed, impressionist look of stone comes in beautifully mottled colours. Perfect for wall and floor.

**ZORAH MID GREY**

Product Code: ZR-984  
Size: 400x400x8mm  
Faces: 7  
[CLICK HERE](#) to view online



**ZORAH LIGHT GREY**

Product Code: ZR-985  
Size: 400x400x8mm  
Faces: 7  
[CLICK HERE](#) to view online



**ZORAH BONE**

Product Code: ZR-986  
Size: 400x400x8mm  
Faces: 7  
[CLICK HERE](#) to view online



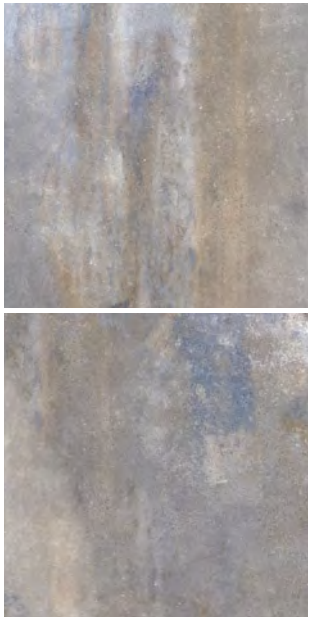
**ZORAH STONE**

Product Code: ZR-987  
Size: 400x400x8mm  
Faces: 7  
[CLICK HERE](#) to view online



**ZORAH MULTI COLOUR**

Product Code: ZR-983/R  
Size: 400x400x8mm  
Faces: 6  
[CLICK HERE](#) to view online



SLIP RESISTANT

\*Please note, not all tile faces may be shown, if you need to see all tile faces please contact our sales office at [sales@johnsontiles.co.za](mailto:sales@johnsontiles.co.za) for a product fact sheet.

**PRODUCT SUMMARY**

Collection:	Urban
Description:	Multicoloured soft stone design
Material:	Glazed ceramic
Finish:	Matt / Slip resistant
Area:	Indoor / Outdoor
Application:	Wall & floor

**PACKAGING SUMMARY**

	330x330x7mm	400x400x8mm	490x490x9mm	242x490x9mm
Weight per m²:	13.92kg	15.63kg	19kg	18.90kg
Weight per pallet:	1804kg	1278kg	1550kg	2196kg
Quantity per box:	1.8m²	1.46m²	1.7m²	1.21m²
Quantity per pallet:	129.6m²	81.76m²	81.6m²	116.16m²
Boxes per pallet:	72	56	48	96
Tiles per box:	16	9	7	10





# ATTERBURY

Softer shades of timber bring both warmth and vibrancy to a room. It’s a modern take on the intimate log cabin. Perfect for wall and floor.

**ATTERBURY MOCCA**

Product Code: AB-993  
Size: 242x490x9mm  
Faces: 4  
[CLICK HERE](#) to view online



**ATTERBURY STEEL**

Product Code: AB-994  
Size: 242x490x9mm  
Faces: 4  
[CLICK HERE](#) to view online



**ATTERBURY PEARL**

Product Code: AB-995  
Size: 242x490x9mm  
Faces: 4  
[CLICK HERE](#) to view online



\*Please note, not all tile faces may be shown, if you need to see all tile faces please contact our sales office at [sales@johnsontiles.co.za](mailto:sales@johnsontiles.co.za) for a product fact sheet.

**PRODUCT SUMMARY**

Collection:	Urban
Description:	Stone, wood fusion mixed design
Material:	Glazed ceramic
Finish:	Matt
Area:	Indoor
Application:	Wall & floor

**PACKAGING SUMMARY**

	330x330x7mm	400x400x8mm	490x490x9mm	242x490x9mm
Weight per m²:	13.92kg	15.63kg	19kg	18.90kg
Weight per pallet:	1804kg	1278kg	1550kg	2196kg
Quantity per box:	1.8m²	1.46m²	1.7m²	1.21m²
Quantity per pallet:	129.6m²	81.76m²	81.6m²	116.16m²
Boxes per pallet:	72	56	48	96
Tiles per box:	16	9	7	10



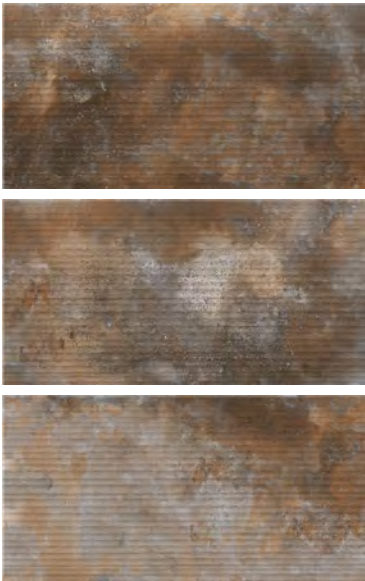


# NGURA

Inspired by the contemporary cement look this tile features a stylish wave structure adding a unique textural effect. Perfect for features walls.

### NGURA MIX

Product Code: NG-202  
Size: 242x490x9mm  
Faces: 7  
[CLICK HERE](#) to view online



### NGURA BROWN

Product Code: NG-200  
Size: 242x490x9mm  
Faces: 7  
[CLICK HERE](#) to view online



### NGURA IRON

Product Code: NG-201  
Size: 242x490x9mm  
Faces: 7  
[CLICK HERE](#) to view online



'WAVE' SURFACE

\*Please note, not all tile faces may be shown, if you need to see all tile faces please contact our sales office at [sales@johnsontiles.co.za](mailto:sales@johnsontiles.co.za) for a product fact sheet.

#### PRODUCT SUMMARY

Collection:	Urban
Description:	Cement look design
Material:	Glazed ceramic
Finish:	Satin matt with a wave structure
Area:	Indoor
Application:	Wall

#### PACKAGING SUMMARY

	100x200x7mm
Weight per m²:	14.00kg
Weight per pallet:	1050kg
Quantity per box:	1m²
Quantity per pallet:	75m²
Boxes per pallet:	75
Tiles per box:	50





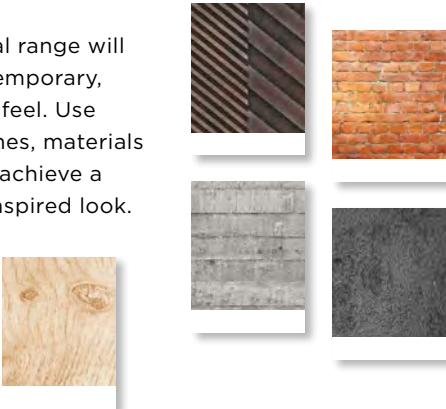
# KGOSI

Create a bold feature with a contrasting design that reflects in multiple patterns. Perfect for wall and floor.

**KGOSI GREY**  
Product Code: KS-030  
Size: 490x490x9mm  
Faces: 1  
[CLICK HERE](#) to view online



**TREND TIP:**  
A neutral tonal range will create a contemporary, sophisticated feel. Use textured finishes, materials and decor, to achieve a modern loft inspired look.



\*Please note, not all tile faces may be shown, if you need to see all tile faces please contact our sales office at [sales@johnsontiles.co.za](mailto:sales@johnsontiles.co.za) for a product fact sheet.

## PRODUCT SUMMARY

Collection:	Urban
Description:	An exquisite grey encaustic design
Material:	Glazed ceramic
Finish:	Matt
Area:	Indoor
Application:	Wall & floor

## PACKAGING SUMMARY

	330x330x7mm	400x400x8mm	490x490x9mm	242x490x9mm
Weight per m²:	13.92kg	15.63kg	19kg	18.90kg
Weight per pallet:	1804kg	1278kg	1550kg	2196kg
Quantity per box:	1.8m²	1.46m²	1.7m²	1.21m²
Quantity per pallet:	129.6m²	81.76m²	81.6m²	116.16m²
Boxes per pallet:	72	56	48	96
Tiles per box:	16	9	7	10





# SIMENDE

A cool, calm, classy collection. This subtly textured, screed look is the ultimate in contemporary chic. Perfect for wall and floor.

## SIMENDE MIST

Product Code: SN-005  
Size: 490x490x9mm  
Faces: 8  
[CLICK HERE](#) to view online



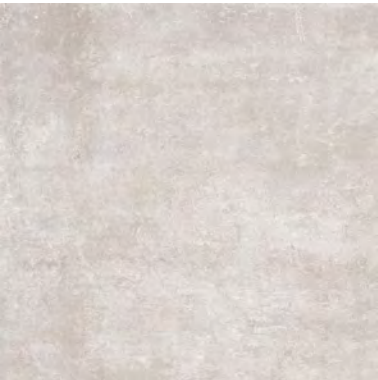
## SIMENDE CHARCOAL

Product Code: SN-004  
Size: 490x490x9mm  
Faces: 8  
[CLICK HERE](#) to view online



## SIMENDE IVORY

Product Code: SN-006  
Size: 490x490x9mm  
Faces: 8  
[CLICK HERE](#) to view online



## SIMENDE BIANCO

Product Code: SN-011  
Size: 490x490x9mm  
Faces: 8  
[CLICK HERE](#) to view online



\*Please note, not all tile faces may be shown, if you need to see all tile faces please contact our sales office at [sales@johnsontiles.co.za](mailto:sales@johnsontiles.co.za) for a product fact sheet.

### PRODUCT SUMMARY

Collection:	Urban
Description:	Soft but bold cement
Material:	Glazed ceramic
Finish:	Matt
Area:	Indoor
Application:	Wall & floor

### PACKAGING SUMMARY

	330x330x7mm	400x400x8mm	490x490x9mm	242x490x9mm
Weight per m <sup>2</sup> :	13.92kg	15.63kg	19kg	18.90kg
Weight per pallet:	1804kg	1278kg	1550kg	2196kg
Quantity per box:	1.8m <sup>2</sup>	1.46m <sup>2</sup>	1.7m <sup>2</sup>	1.21m <sup>2</sup>
Quantity per pallet:	129.6m <sup>2</sup>	81.76m <sup>2</sup>	81.6m <sup>2</sup>	116.16m <sup>2</sup>
Boxes per pallet:	72	56	48	96
Tiles per box:	16	9	7	10

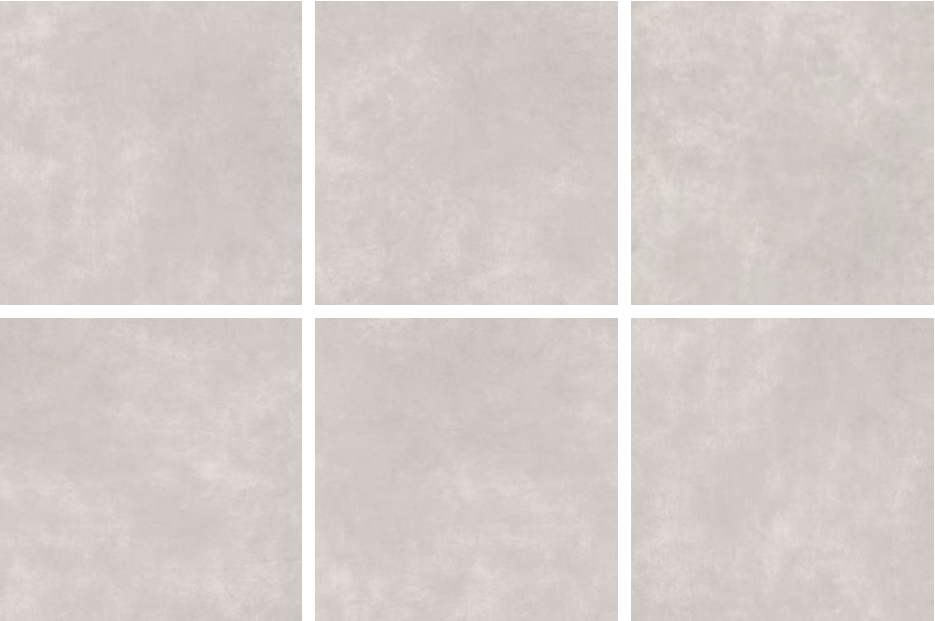




# TOULOUSE

A contemporary soft cement design that creates a soothing and tranquil setting. Perfect for walls and floors.

**TOULOUSE GREY**  
Product Code: TU-650  
Size: 490x49x9mm  
Faces: 6  
[CLICK HERE](#) to view online



\*Please note, not all tile faces may be shown, if you need to see all tile faces please contact our sales office at [sales@johnsontiles.co.za](mailto:sales@johnsontiles.co.za) for a product fact sheet.

PRODUCT SUMMARY	
Collection:	Urban
Description:	Soft cement design
Material:	Glazed ceramic
Finish:	Matt
Area:	Indoor
Application:	Wall & floor

PACKAGING SUMMARY	330x330x7mm	400x400x8mm	490x490x9mm	242x490x9mm
Weight per m²:	13.92kg	15.63kg	19kg	18.90kg
Weight per pallet:	1804kg	1278kg	1550kg	2196kg
Quantity per box:	1.8m²	1.46m²	1.7m²	1.21m²
Quantity per pallet:	129.6m²	81.76m²	81.6m²	116.16m²
Boxes per pallet:	72	56	48	96
Tiles per box:	16	9	7	10





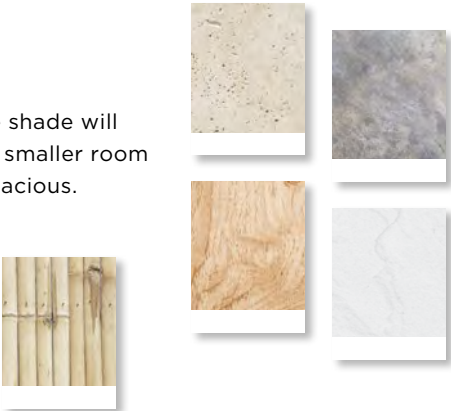
# BRILLO

Confident simplicity. This glazed porcelain finish is a testament to style. Perfect for wall and floor.

**BRILLO IVORY**  
Product Code: BI-600  
Size: 600x600x8mm  
Faces: 1  
[CLICK HERE](#) to view online



**TREND TIP:**  
A lighter tile shade will help make a smaller room feel more spacious.



\*Please note, not all tile faces may be shown, if you need to see all tile faces please contact our sales office at [sales@johnsontiles.co.za](mailto:sales@johnsontiles.co.za) for a product fact sheet.

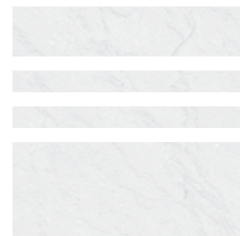
PRODUCT SUMMARY

Collection:	Urban
Description:	Polished porcelain floor tile
Material:	Porcelain
Finish:	Gloss
Area:	Indoor
Application:	Wall & floor

PACKAGING SUMMARY

	600x600x9mm
Weight per m²:	33.12kg
Weight per pallet:	1324.8kg
Quantity per box:	1.44m²
Quantity per pallet:	57.6m²
Boxes per pallet:	40
Tiles per box:	4





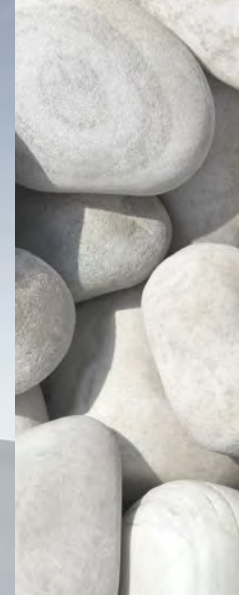
# WHITE COLLECTION

Radiant Living

The Johnson Tiles trend team has designed the White Collection for the discerning palate.  
Minimalist meets classic sophistication - this collection is about less, not more.



JOHNSON • TILES®  
Tile Artisans Since 1901







# ESSENCE

Go large. Go small. A multi-format collection can also make for a playfully designed wall.

**ESSENCE WHITE GLOSS**

Product Code: GWC-197  
Size: 197x197x7mm  
Faces: 1  
[CLICK HERE](#) to view online



**ESSENCE WHITE MATT**

Product Code: MWC-197  
Size: 197x197x7mm  
Faces: 1  
[CLICK HERE](#) to view online



**ESSENCE WHITE GLOSS**

Product Code: WGI-4-1  
Size: 150x150x7mm  
Faces: 1  
[CLICK HERE](#) to view online



**ESSENCE WHITE MATT**

Product Code: WMI-4-1  
Size: 150x150x7mm  
Faces: 1  
[CLICK HERE](#) to view online



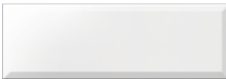
**ESSENCE WHITE GLOSS**

Product Code: GWW-4-1  
Size: 300x600x9mm  
Faces: 1  
[CLICK HERE](#) to view online



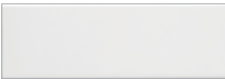
**ESSENCE GLOSS BEVEL**

Product Code: B1300-B-84  
Size: 100x300x7mm  
Faces: 1  
[CLICK HERE](#) to view online



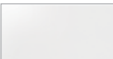
**ESSENCE WHITE MATT**

Product Code: WB10302M  
Size: 100x300x7mm  
Faces: 1  
[CLICK HERE](#) to view online



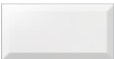
**ESSENCE WHITE GLOSS**

Product Code: WB75150G  
Size: 75x150x7mm  
Faces: 1  
[CLICK HERE](#) to view online



**ESSENCE WHITE GLOSS BEVEL**

Product Code: WB75152  
Size: 75x150x7mm  
Faces: 1  
[CLICK HERE](#) to view online



\*Please note, not all tile faces may be shown, if you need to see all tile faces please contact our sales office at [sales@johnsontiles.co.za](mailto:sales@johnsontiles.co.za) for a product fact sheet.

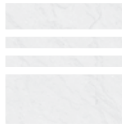
**PRODUCT SUMMARY**

Collection:	White
Description:	White wall tile with different finishes
Material:	Glazed ceramic
Finish:	Gloss / Matt
Area:	Indoor
Application:	Wall

**PACKAGING SUMMARY**

	197x197x7mm	100x300x7mm	150x150x7mm	75x150x7mm	300x600x9mm	100x300x7.5mm MATT
Weight per m²:	10.90kg	13.50kg	9.53kg	12.42kg	15.77kg	15.96kg
Weight per pallet:	1046.40kg	1134kg	1143.60kg	894.24kg	946.20kg	1276.8kg
Quantity per box:	1m²	0.99m²	1m²	1.53m²	1.44m²	1.2m²
Quantity per pallet:	96m²	83.16m²	120m²	110.16m²	86.4m²	96m²
Boxes per pallet:	96	84	120	72	60	80
Tiles per box:	25	33	44	136	8	40





# ARCTIC WHITE

Enliven a space with crisp, clean white. A speckled lava stone finish with a matt, structured relief surface. Perfect for wall and floor.

**ARCTIC WHITE**

Product Code: AC-191  
Size: 400x400x8mm  
Faces: 1  
[CLICK HERE](#) to view online



**ARCTIC WHITE**

Product Code: AC-626  
Size: 330x330x7mm  
Faces: 1  
[CLICK HERE](#) to view online



\*Please note, not all tile faces may be shown, if you need to see all tile faces please contact our sales office at [sales@johnsontiles.co.za](mailto:sales@johnsontiles.co.za) for a product fact sheet.

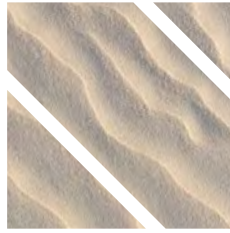
**PRODUCT SUMMARY**

Collection:	White
Description:	Orange peel look
Material:	Glazed ceramic
Finish:	Matt
Area:	Indoor
Application:	Wall & floor

**PACKAGING SUMMARY**

	330x330x7mm	400x400x8mm	490x490x9mm	242x490x9mm
Weight per m²:	13.92kg	15.63kg	19kg	18.90kg
Weight per pallet:	1804kg	1278kg	1550kg	2196kg
Quantity per box:	1.8m²	1.46m²	1.7m²	1.21m²
Quantity per pallet:	129.6m²	81.76m²	81.6m²	116.16m²
Boxes per pallet:	72	56	48	96
Tiles per box:	16	9	7	10





# ETOSHA COLLECTION

Boundless Living

From the rich tones of desert dunes to the calming hues of sun-bleached beach sand, this range brings elegance and tranquility into your living space.



JOHNSON • TILES®  
Tile Artisans Since 1901





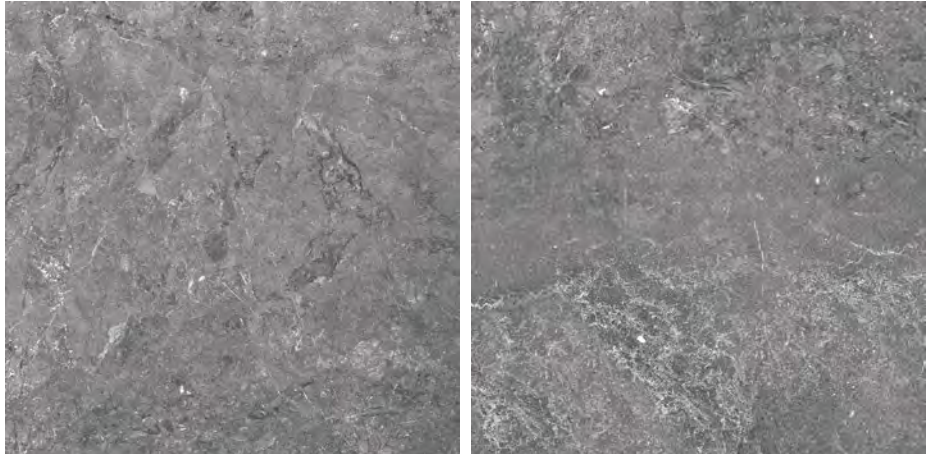


# ILTAS

A speckled lava stone finish. Perfect for wall and floor.

## ILTAS GREY

Product Code: IL-004  
Size: 600x600x8mm  
Faces: 7  
[CLICK HERE](#) to view online



## ILTAS LIGHT GREY

Product Code: IL-003  
Size: 600x600x8mm  
Faces: 6  
[CLICK HERE](#) to view online



\*Please note, not all tile faces may be shown, if you need to see all tile faces please contact our sales office at [sales@johnsontiles.co.za](mailto:sales@johnsontiles.co.za) for a product fact sheet.

### PRODUCT SUMMARY

Collection:	Etosha
Description:	A speckled lava stone finish
Material:	Glazed Polished Porcelain
Finish:	Polished Porcelain
Area:	Indoor
Application:	Wall & floor

### PACKAGING SUMMARY

	600x600x8mm Rectified
Weight per m²:	27.3kg
Weight per pallet:	1332.0kg
Quantity per box:	1.44m²
Quantity per pallet:	69.12m²
Boxes per pallet:	48
Tiles per box:	4





# OPULENT STATUARIO

Enliven a space with this classic veined marble look. Perfect for wall and floor.

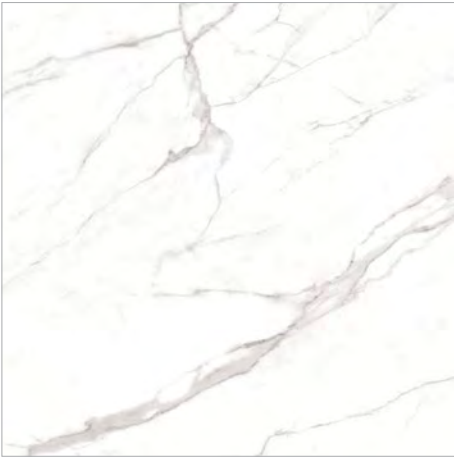
**OPULENT STATUARIO**

Product Code: OS-001

Size: 600x600x8mm

Faces: 4

[CLICK HERE](#) to view online



\*Please note, not all tile faces may be shown, if you need to see all tile faces please contact our sales office at [sales@johnsontiles.co.za](mailto:sales@johnsontiles.co.za) for a product fact sheet.

**PRODUCT SUMMARY**

Collection:	Etosha
Description:	A timeless veined marble look
Material:	Glazed Polished Porcelain
Finish:	Polished Porcelain
Area:	Indoor
Application:	Wall & floor

**PACKAGING SUMMARY**

	<b>600x600x8mm Rectified</b>
Weight per m²:	27.3kg
Weight per pallet:	1332.0kg
Quantity per box:	1.44m²
Quantity per pallet:	69.12m²
Boxes per pallet:	48
Tiles per box:	4





# SANDSTONE

A delicately mottled design that can be used on walls and floors.

## SANDSTONE LIGHT GREY

Product Code: SS-006  
Size: 600x600x8mm  
Faces: 6  
[CLICK HERE](#) to view online



## SANDSTONE KHAKI

Product Code: SS-007  
Size: 600x600x8mm  
Faces: 6  
[CLICK HERE](#) to view online



\*Please note, not all tile faces may be shown, if you need to see all tile faces please contact our sales office at [sales@johnsontiles.co.za](mailto:sales@johnsontiles.co.za) for a product fact sheet.

### PRODUCT SUMMARY

Collection:	Etosha
Description:	A delicate mottled design
Material:	Glazed Polished Porcelain
Finish:	Polished Porcelain
Area:	Indoor
Application:	Wall & floor

### PACKAGING SUMMARY

	600x600x8mm Rectified
Weight per m²:	27.3kg
Weight per pallet:	1332.0kg
Quantity per box:	1.44m²
Quantity per pallet:	69.12m²
Boxes per pallet:	48
Tiles per box:	4





# SURGE WHITE

An off beige, off-white design with soft contoured strata.

## SURGE WHITE

Product Code: SR-005

Size: 600x600x8mm

Faces: 8

[CLICK HERE](#) to view online



\*Please note, not all tile faces may be shown, if you need to see all tile faces please contact our sales office at [sales@johnsontiles.co.za](mailto:sales@johnsontiles.co.za) for a product fact sheet.

### PRODUCT SUMMARY

Collection:	Etosha
Description:	Off-beige, off white soft contoured strata
Material:	Glazed Polished Porcelain
Finish:	Polished Porcelain
Area:	Indoor
Application:	Wall & floor

### PACKAGING SUMMARY

	600x600x8mm Rectified
Weight per m²:	27.3kg
Weight per pallet:	1332.0kg
Quantity per box:	1.44m²
Quantity per pallet:	69.12m²
Boxes per pallet:	48
Tiles per box:	4





# VERONA GREY

A finely detailed grey grain that will add elegance to any room setting. Perfect for wall and floor.

## VERONA GREY

Product Code: VR-002

Size: 600x600x8mm

Faces: 8

[CLICK HERE](#) to view online



\*Please note, not all tile faces may be shown, if you need to see all tile faces please contact our sales office at [sales@johnsontiles.co.za](mailto:sales@johnsontiles.co.za) for a product fact sheet.

### PRODUCT SUMMARY

Collection:	Etosha
Description:	A finely detailed grey grain
Material:	Glazed Polished Porcelain
Finish:	Polished Porcelain
Area:	Indoor
Application:	Wall & floor

### PACKAGING SUMMARY

	600x600x8mm Rectified
Weight per m <sup>2</sup> :	27.3kg
Weight per pallet:	1332.0kg
Quantity per box:	1.44m <sup>2</sup>
Quantity per pallet:	69.12m <sup>2</sup>
Boxes per pallet:	48
Tiles per box:	4



**IMPORTANT INFORMATION.**

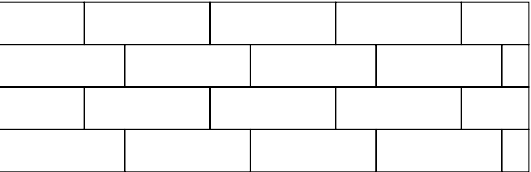
Tiles are packaged in boxes according to size. There are differences between the different packaging sizes. The work size is the actual size of the tile and not the size by which the tile is known. The size by which the tile is known is the nominal size. Sometimes we round up the size of the tile as it is easier to understand. For example: The nominal size is known as 500x500 but its work size (the actual size) is 490x490x9mm. We also categorise the size of our tiles into different size bands at Johnson Tiles.

There can be a slight difference in the work size of the tile and the actual size. The size difference differs by percentage depending on the tile size. This conforms to ISO 13006 as well as SANS 1449. We have created three size bands per work size namely S1, S2 and S3.

	PANEL LENGTH AND WIDTH			
Nominal Size	330x330mm	400x400mm	500x500mm	250x500mm
S1	330.0 - 332.6mm	398.0 - 400.0mm	490.0 - 492.4mm	242.0 - 243.2mm x 490.0 - 492.4mm
S2	329.4 - 331.0mm	396.0 - 398.0mm	487.6 - 490.0mm	240.8 - 242.0mm x 487.6 - 490.0mm
S3	332.6 - 334.2mm	400.0 - 402.0mm	492.4 - 494.8mm	243.2 - 244.4mm x 492.4 - 494.8mm

This slight size variation can make a difference to an installation over a large area so a specifier needs to take this into account. It is very important that they take into account the work size and in which size band the tiles are when they work out the required quantity. Failure to do so could result in there not being enough tiles. This could affect the quality and overall finish of the installation. This size band table is printed on all of our packaging along with the batch number and product code.

Rectangular tiles like the 242x490mm tile may be slightly ‘bowed’ or ‘curved’ so these need to be installed in a staggered bond pattern with an offset of 30% or less, to avoid the possibility of tile ‘lipping’ occurring. Lipping is when the edges and corners of the tiles stand proud from one another. Laying of tiles in a brick or running bond pattern is not recommended.



Always consider encouraging your client to order more tiles than they need. Just 10% extra should do it. Here’s why. They might have a few breakages during tiling. More importantly, if there is any damage years after the new installation, they’ll want the exact same replacement tiles. The manufacturing of tile batches come in slightly different shades. Tiles can also be discontinued. With backup spares, or what we like to call “attic stock” tiles, you’re all set.

# JOHNSON • TILES®

Tile Artisans Since 1901

Our product collections and extensive range of tile types are available nationwide, from any of our distributors.  
Contact us directly for their details and product ranges.

**Johnson Tiles South Africa Head Office:**  
**Tel:** 011 206 9700 **Fax:** 011 316 2863  
For general sales queries, please email: [sales@johnsontiles.co.za](mailto:sales@johnsontiles.co.za)  
For export sales queries, please email: [johnsonexports@johnsontiles.co.za](mailto:johnsonexports@johnsontiles.co.za)

Johnson Tiles is a registered trademark of Norcros South Africa (PTY) LTD.  
© Johnson Tiles a division of Norcros South Africa (PTY) LTD. 2021.





JOHNSON • TILES®

Tile Artisans Since 1901